

BSL CHRISTMAS WORD SEARCH

CHRISTMAS

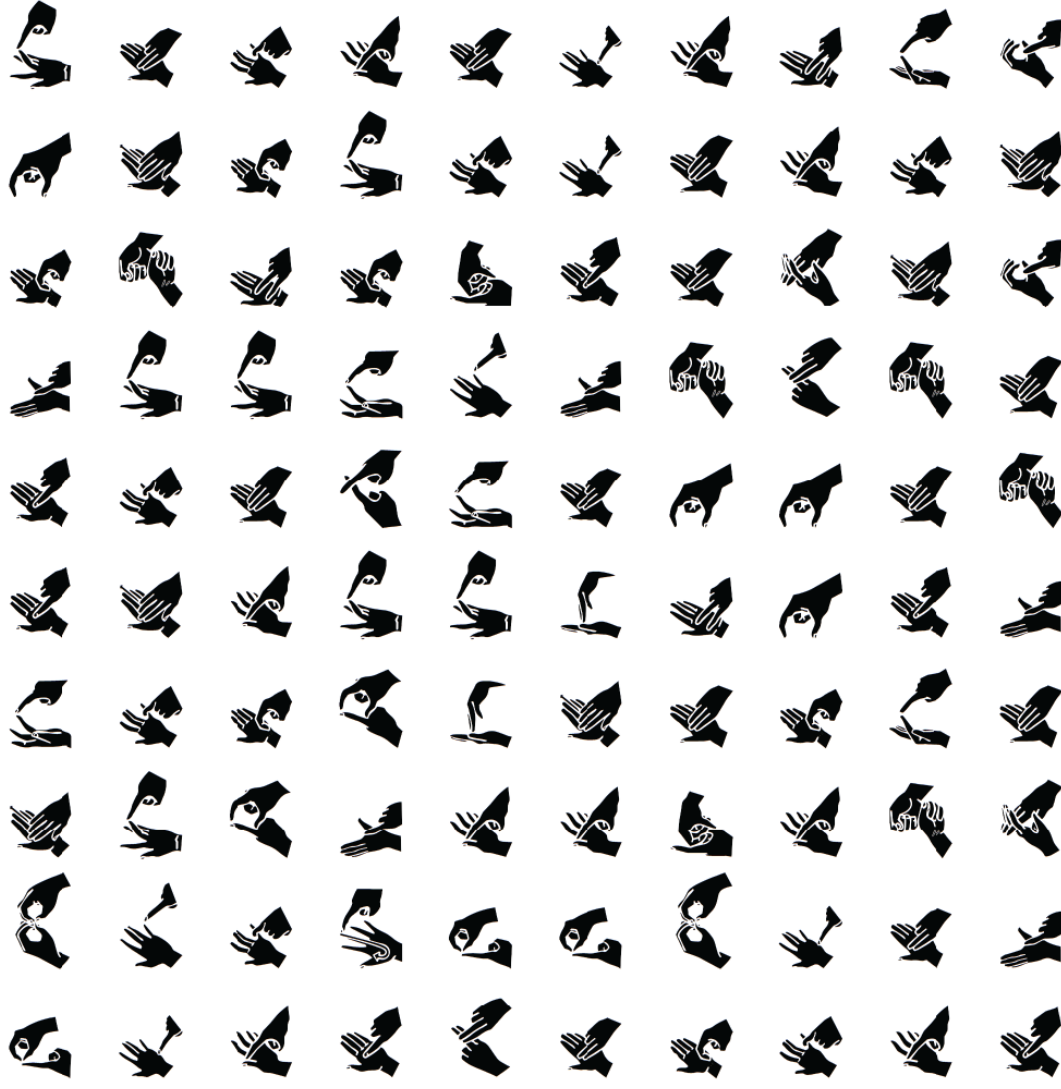
SANTA

ANGEL

STAR

HOLLY

PUDDING



HAPPY

Both hands open. Palm of dominant hand taps palm of non-dominant hand twice.



CHRISTMAS

Flat primary hand rests on top of flat secondary hand. Primary hand lifts up while closing and then fist rests on top of secondary hand.



british-sign.co.uk

LEARN BRITISH SIGN LANGUAGE ONLINE AT
WWW.BRITISH-SIGN.CO.UK