

CAN YOU GUESS THE BSL  
SIGNS FOR THESE WORDS?

BOOK



[british-sign.co.uk](http://british-sign.co.uk)



# BOOK

*Both flat hands start with palms held together in front of body. Hands twist so that little fingers remain together while hands open.*

COW



[british-sign.co.uk](http://british-sign.co.uk)



## COW

*Hands with extended thumb and little finger start with thumb touching side of head. Hands twist backwards slightly while moving forwards. Can be 1 or 2 handed.*

CAT



# CAT

*Both hands open with fingers apart and slightly bent. Hands start at each side of face and make a short outwards movement.*

AEROPLANE





# AEROPLANE

*Thumb and little finger of primary hand extended with palm facing downwards. Hand starts in front of body and moves up at an angle across body.*

ME



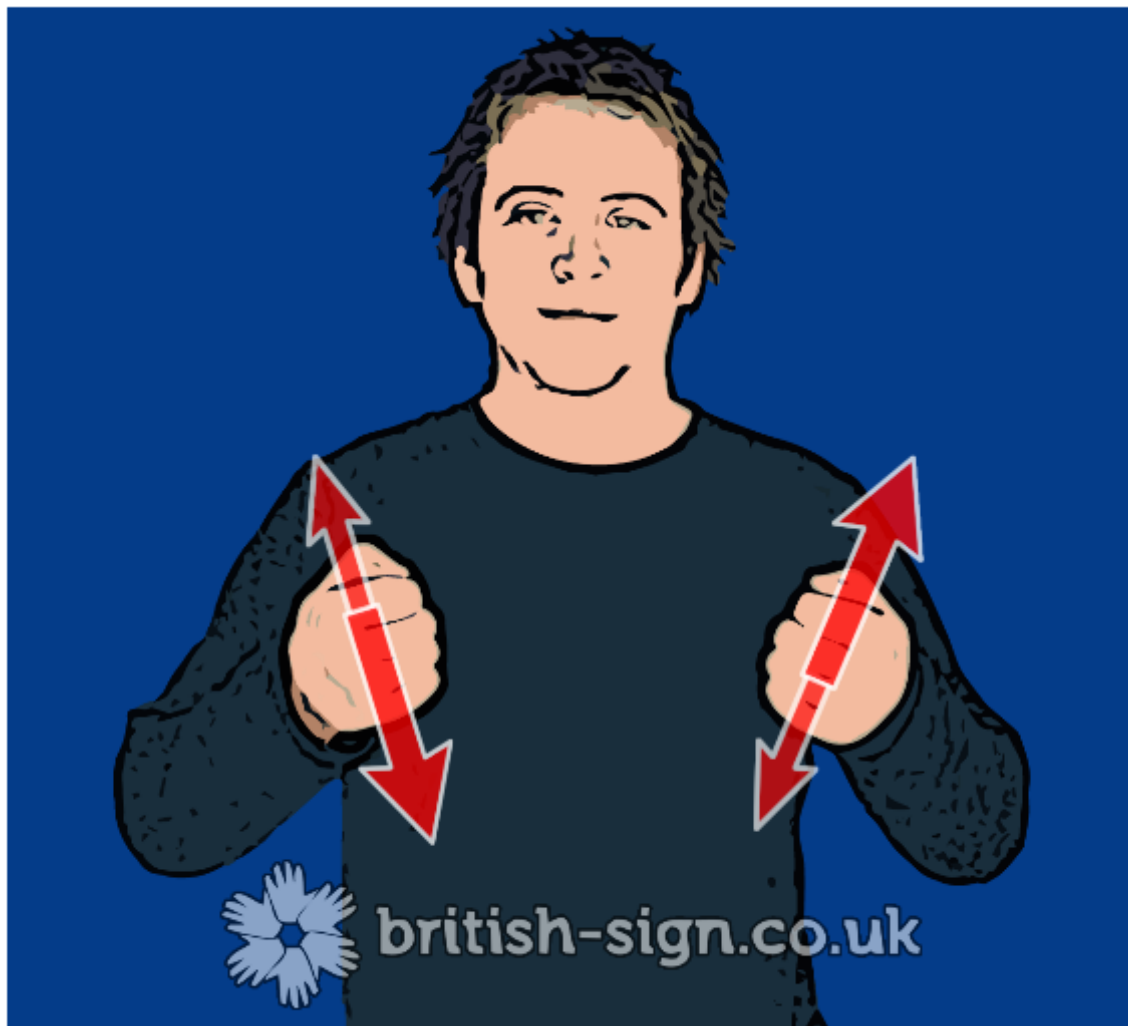
[british-sign.co.uk](http://british-sign.co.uk)



ME

*Index finger points at signer.*

CAR



# CAR

*Both closed hands make up and down movements in front of body in opposite directions.*